

ASHLAND HIGH SCHOOL

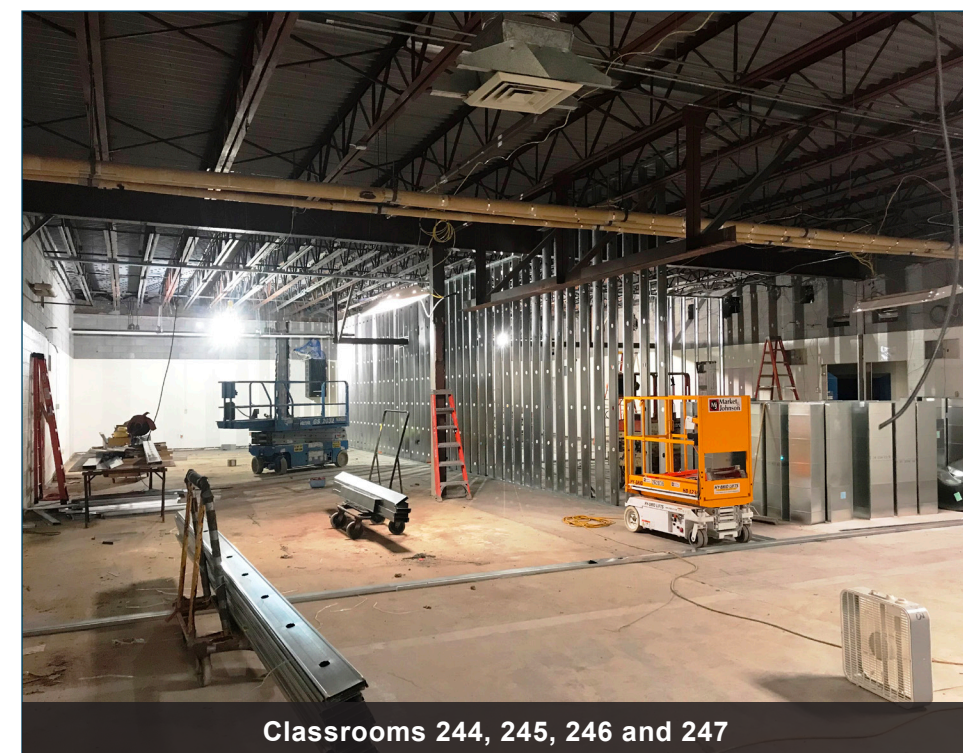


The following is a list of work performed in the last 30 days:

- Taping and painting in Charter Classroom and Guidance Office
- Completed soffits for skylights in Charter Classroom
- Ceiling grid, lights, and diffusers in Charter Classroom
- Install aluminum storefronts for display cases around Charter Classroom
- Completed demo of ceilings, flooring, ceramic tile, walls, and casework for phase 3
- Completed HVAC and electrical removals for phase 3
- Installed remaining split joists
- Started electrical work in auditorium
- Framed metal stud partitions for phase 3
- Started new electrical, HVAC, and plumbing rough-ins
- Pour sidewalks around fieldhouse and office at front of building
- Graded out site for sidewalks and seeding restoration



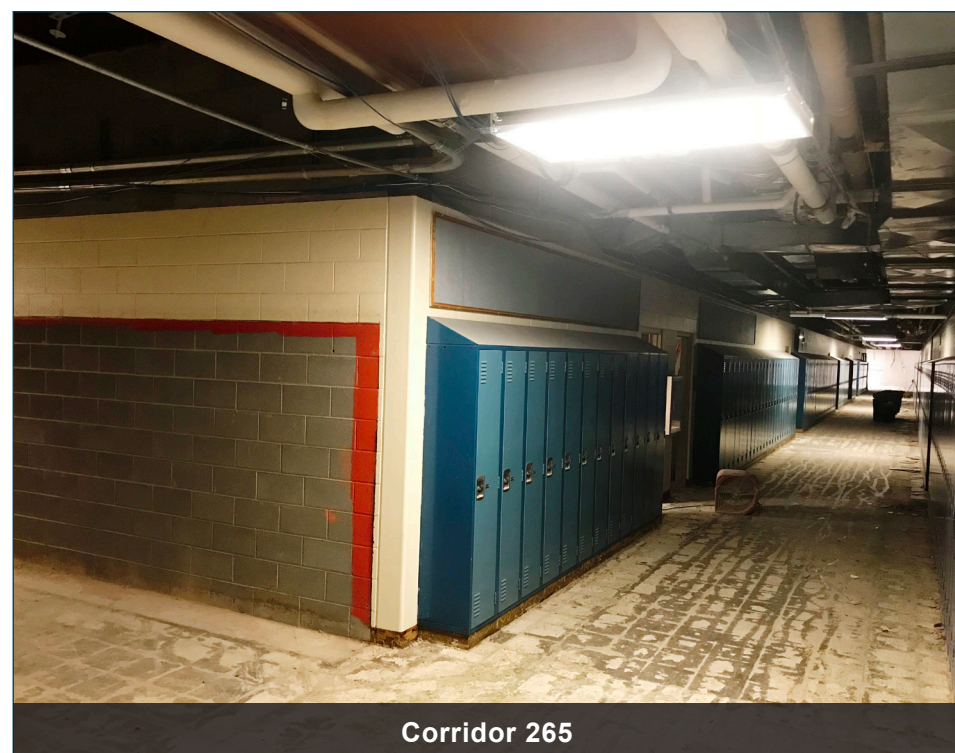
Display Cases Outside Charter Classroom



Classrooms 244, 245, 246 and 247

The following is a list of work scheduled for the next 30 days:

- Complete framing and wall rough-ins for FACE and Art areas
- Sheetrock walls and soffits for FACE and Art
- Install ceiling tile and flooring in Charter Classroom
- Install skylights in Charter Classroom
- Continue new electrical work in auditorium
- Taping and painting walls in FACE and Art
- Install casework in Charter Classroom and FACE areas
- Start ceramic tile in corridors
- Install ceiling grid in corridors, FACE, and Art
- Re-finish terrazzo in commons
- Complete misc. work in fieldhouse
- Start painting of existing lockers



Corridor 265



Charter Classroom